

Standard Factory Building Type ST-4



FACTORY TYPE
Detached double-storey

LAND PLOT AREA
45m x 18m : 810 Sq.m

MAIN BUILDING SIZE : 566 Sq.m

LETTABLE AREA
Ground floor : 556 Sq.m
Second floor : 534 Sq.m
Total : 1,090 Sq.m

HEIGHT
Ground floor to second floor : 4.00 m
Second floor to ceiling : 3.80 m

STRUCTURE
Steel and concrete structures are designed according to Indonesian standard.

FLOOR LIVE LOAD DESIGN
Ground floor : 750 Kg/ Sq.m
Mezzanine floor : 400 Kg/ Sq.m

TOILET
First floor
Male : 1 mono block closet, 2 squatting closets, 3 wash basins, 1 urinal block.
Female : 1 mono block closet, 2 squatting closets, 3 wash basins, 1 urinal block.

Second floor
Male : 1 mono block closet, 2 squatting closets, 3 wash basins, 1 urinal block.
Female : 1 mono block closet, 2 squatting closets, 3 wash basins, 1 urinal block.

DOORS
Steel rolling door at loading area. Aluminium frame with rayban glass 5 mm at entrance.
Aluminium door and aluminium frame at toilet area

WINDOWS
Aluminium frame with rayban glass 5mm.

WALLS
Brickwall with plastered and painted on both sides.
Ceramic tile on toilet area.

ROOF
Metal roofing with heat insulation.

FLOOR FINISHING
Production area with non metallic floor hardener.
Ceramic tiles on toilet area.

WATER SUPPLY
Clear water is available.

ELECTRICITY SUPPLY
Ready to connect at 380 V or 20 KV/50 HZ.

LIGHTNING PROTECTION
Electrostatic System.

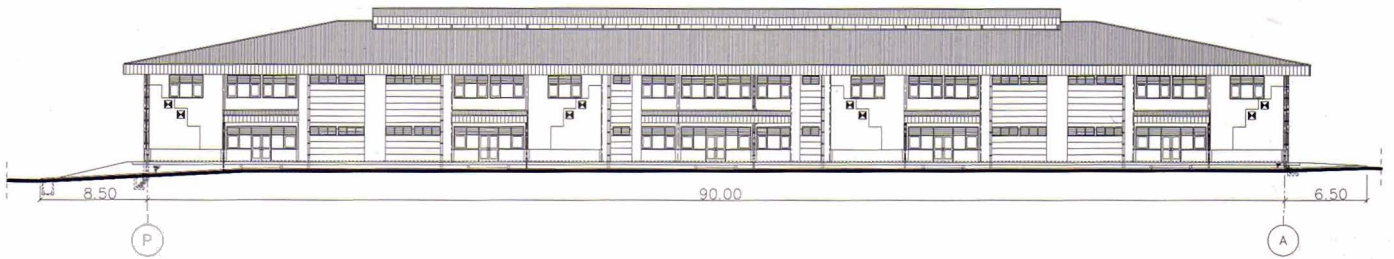
FIRE FIGHTING SYSTEM
Four portable fire extinguisher are provided.

TELECOMMUNICATION
Telephone lines are ready to connect.

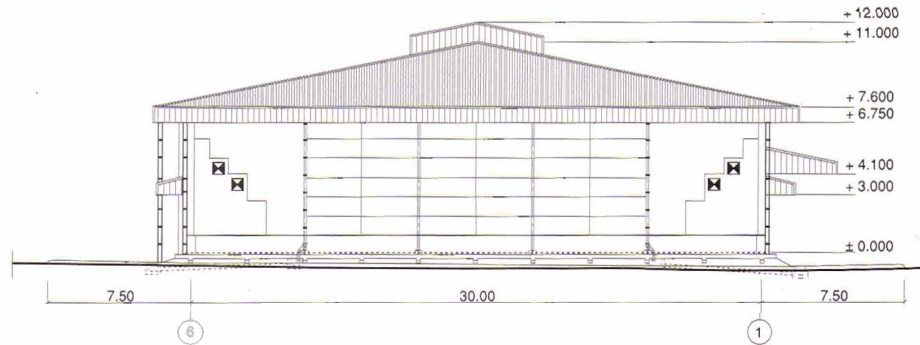
SEWERAGE
Sewer line to Waste Water Treatment Plant.

OTHERS
Car park and loading area.

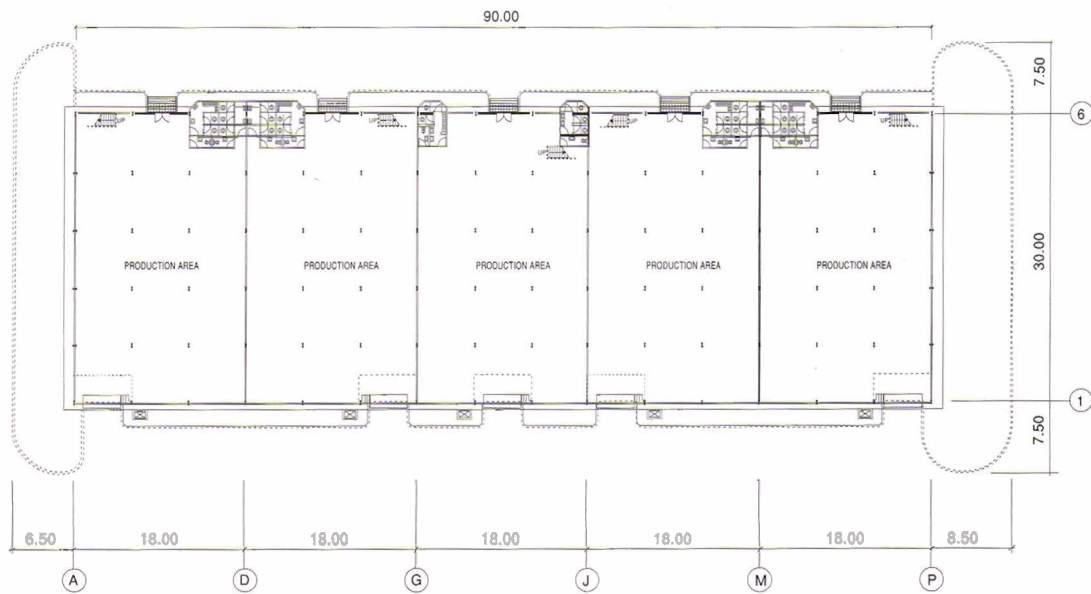
Standard Factory Building Type ST-4



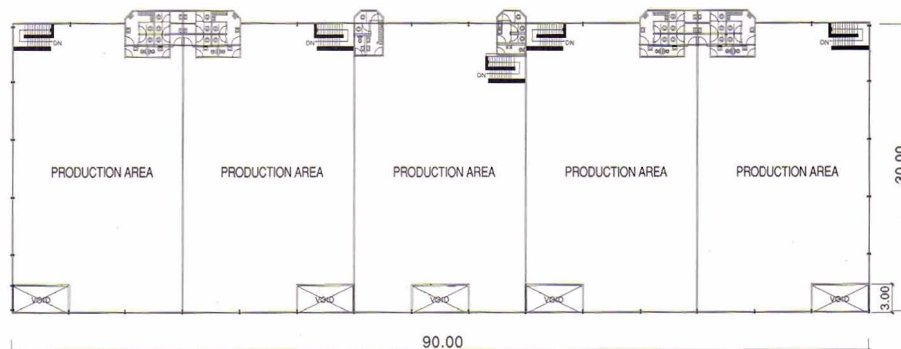
FRONT ELEVATION



SIDE ELEVATION



GROUND FLOOR PLAN



SECOND FLOOR PLAN