

Standard Factory Building Type ST-2



FACTORY TYPE

Single-storey with mezzanine floor

LAND PLOT AREA

44m x 115m : 5,060 Sq.m

BUILDING COVERAGE AREA

(24.34m x 84.16m) +
(2.86m x 8.88m) : 2,075 Sq.m

LETTABLE AREA

Ground floor : 2,075 Sq.m
Mezzanine floor : 345 Sq.m
Total : 2,420 Sq.m

HEIGHT

Ground floor to mezzanine : 3.25 m
Mezzanine floor to ceiling : 2.70 m
Ground floor to roof : 5.95 m

STRUCTURE

Steel and concrete structures are designed according to Indonesian Standard.

FLOOR LIVE LOAD DESIGN

Production floor : 750 Kg/Sq.m
Office and mezzanine floor : 250 Kg/Sq.m

TOILET

Ground floor : 7 squatting closets, 2 mono block closets, 6 wash basins, 1 urinal block.

Mezzanine floor : 2 mono block closets, 2 wash basins.

DOOR

Production area : two sliding doors & two steel emergency doors.
Office area : two swing glass door at entrance.

WINDOWS

Rayban glass 5mm with aluminium frame at office area.

WALLS

Precast concrete wall, painted inside and pearlstone finish outside.

Toilet area with brick wall, plastered & painted and ceramic tile inside.

ROOF

Metal roofing with turbine ventilators.

FLOOR FINISHED

Non-metallic floor hardener on production area. trowelled finish floor on office and mezzanine area, ceramic tile on toilet area.

WATER SUPPLY

Clean water is available.

ELECTRICITY SUPPLY

Ready to connect at 380 V or 20 KV / 50 HZ.

LIGHTNING PROTECTION

Electrostatic system.

FIRE FIGHTING SYSTEM

Four portable fire extinguisher are provided.

TELECOMMUNICATION

Telephone lines are ready to connect.

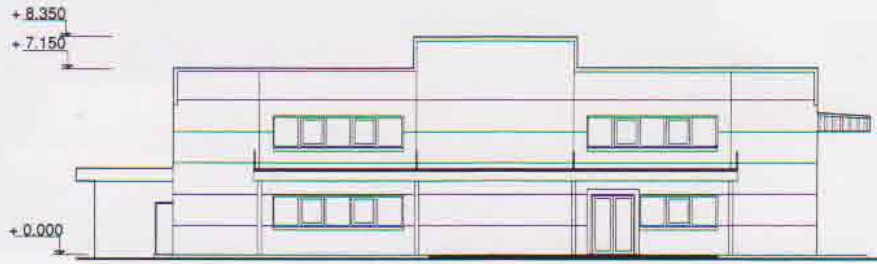
SEWERAGE

Sewer line to Waste Water Treatment Plant.

OTHERS

Guard house, car park and driveway, landscaping, fencing etc.

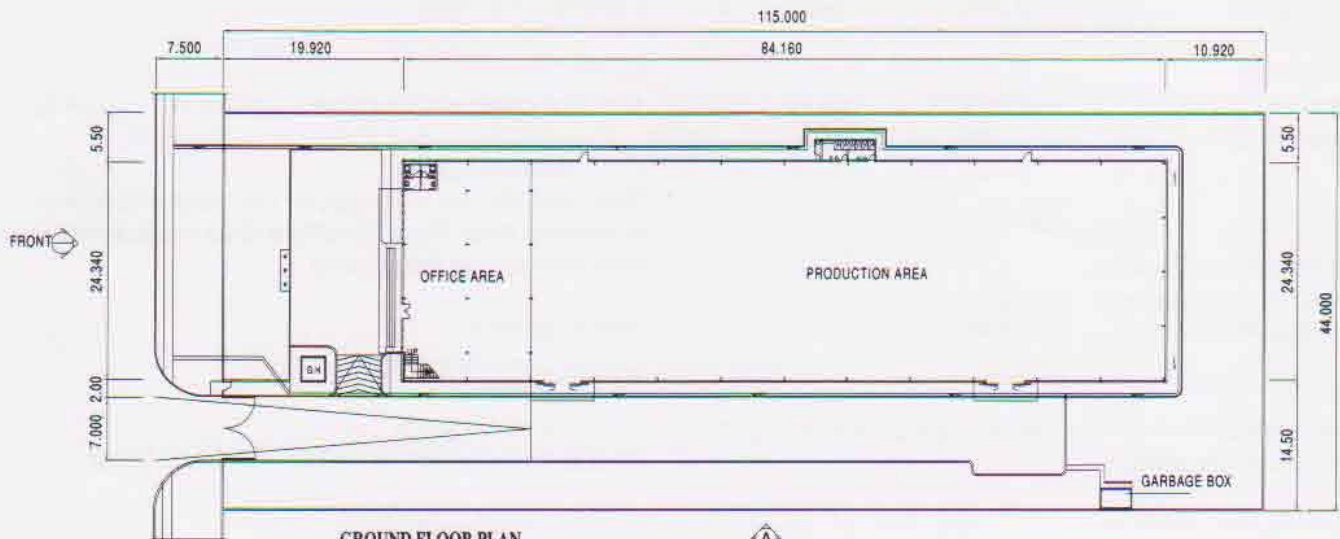
Standard Factory Building Type ST-2



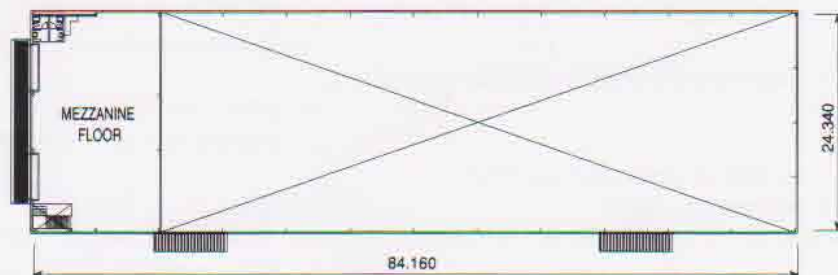
FRONT ELEVATION



SIDE ELEVATION-A



GROUND FLOOR PLAN



MEZZANINE FLOOR PLAN